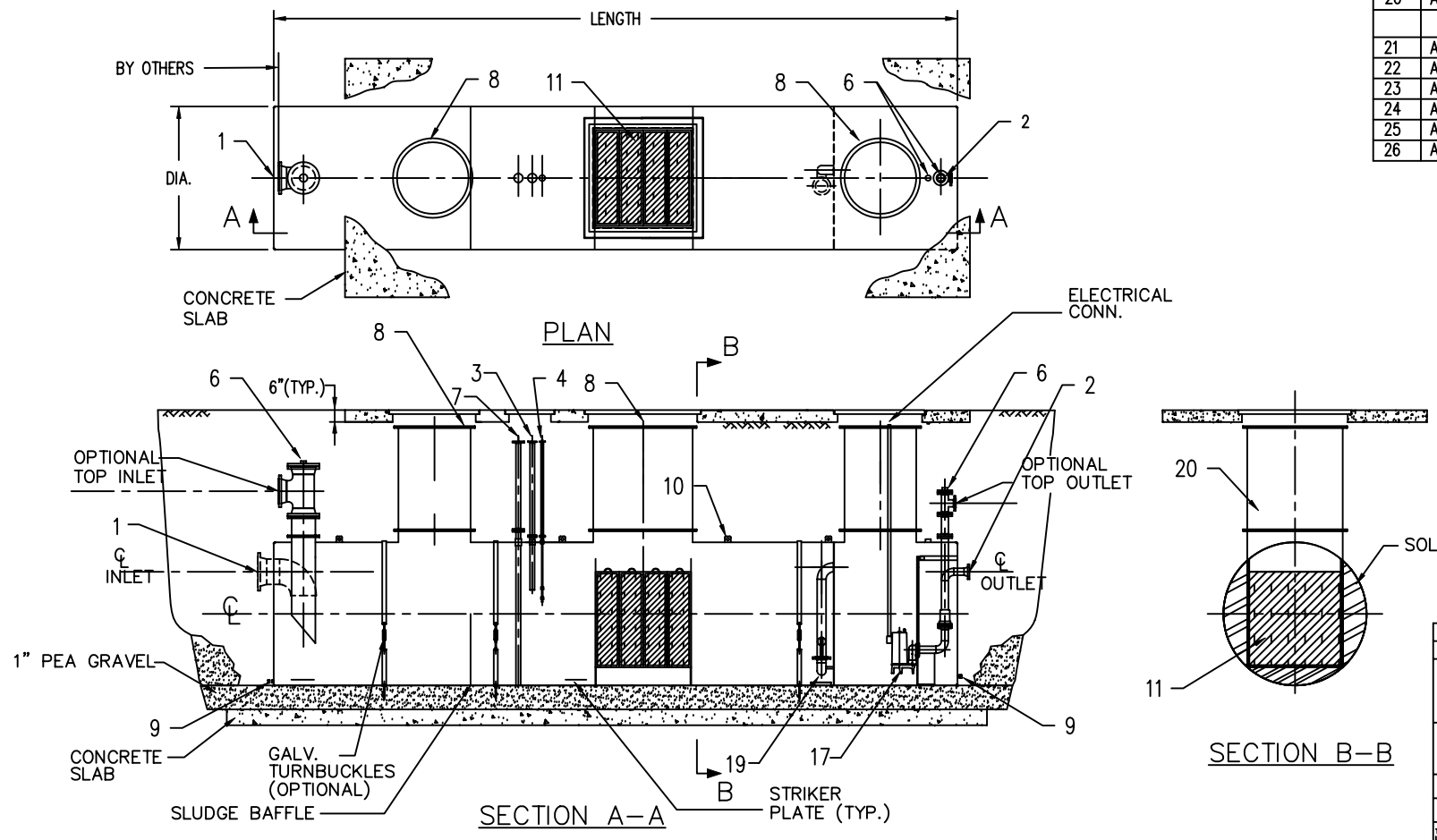


MODEL	DIA.	LENGTH	INLET	OUTLET	FLOW RATE gpm	TANK CAPACITY(GAL.)
HQBP342	3'-6"	7'-0"	4"	4"	30-60	300
HQBP548	4'-0"	9'-0"	4"	4"	55-110	550
HQBP1048	4'-0"	14'-0"	6"	6"	100-200	1000
HQBP2064	5'-4"	15'-0"	6"	6"	200-400	2000
HQBP3064	5'-4"	21'-4"	8"	8"	300-600	3000
HQBP4064	5'-4"	28'-8"	8"	8"	400-800	4000
HQBP5072	6'-0"	28'-8"	8"	8"	500-1000	5000
HQBP6072	6'-0"	34'-0"	10"	10"	600-1200	6000
HQBP7096	8'-0"	22'-0"	10"	10"	700-1400	7000
HQBP8096	8'-0"	24'-6"	10"	10"	800-1600	8000
HQBP9096	8'-0"	28'-8"	12"	12"	900-1800	9000
HQBP1096	8'-0"	32'-0"	12"	12"	1000-2000	10000
HQBP1296	8'-0"	38'-9"	12"	12"	1200-2400	12000
HQBP15120	10'-0"	32'-8"	14"	14"	1500-3000	15000
HQBP12120	10'-0"	38'-9"	12"	12"	2000-4000	20000

- NOTES:**
- OIL/WATER SEPARATOR TANK IS SINGLE/DOUBLE WALL STEEL, TYPE 1. CONSTRUCTED IN ACCORDANCE WITH UL 58 STANDARDS.
 - EXTERIOR: CORROSION PROTECTION PER STI P3 OR FRP.
 - INTERIOR: CORROSION PROTECTION CARBOLINE 300M.
 - VENT SIZING PER UL 58. ALL VENT PIPING IS BY OTHERS.
 - ALL EXTERIOR PIPING IS BY OTHERS. HYDRO QUIP RECOMMENDS A MINIMUM SLOPE OF 1/16" PER FOOT FOR ALL GRAVITY PIPING.
 - TANK ANCHORING CONSISTS OF () HOLD DOWN STRAPS EQUALLY SPACED ALONG THE TANK.
 - THE NORMAL LIQUID LEVEL IN THE TANK IS SET BY THE EFFLUENT PIPING.
 - ALL CONCRETE WORK IS BY OTHERS. THE DESIGN AND INSTALLATION OF THE CONCRETE SLAB OR DEADMEN IS THE RESPONSIBILITY OF THE INSTALLER.
 - PRODUCT STORAGE CAPACITY IS 30% OF THE TOTAL TANK VOLUME.
 - CONTROL PANEL, INSTRUMENTATION, PROBES, AND ELECTRICAL CONDUIT OR JUNCTION BOXES NOT SHOWN.
 - INSTALL OIL/WATER SEPARATOR PER FURNISHED INSTRUCTIONS.
 - THIRTY (30) YEAR WARRANTY PROVIDED ON EXTERIOR CORROSION PROTECTION.
 - CLEAN INERT SAND, PEA GRAVEL OR CRUSHED STONE.

ITEM	QTY.	STANDARD EQUIPMENT
1	1	INFLUENT PORT
2	1	EFFLUENT PORT
3	1	OIL PUMPOUT PORT
4	1	LEVEL SENSOR PORT
5	A/R	SAMPLING/GUAGING PORT
6	3	VENT
7	1	LEAK MONITOR
8	3	ACCESS MANWAY
9	A/R	SACRIFICIAL ANODE (sti-P3 ONLY)
10	A/R	LIFTING LUGS
11	A/R	COALESCING MEDIA
12	A/R	HOLDDOWN STRAPS
OPTIONAL EQUIPMENT		
14	1	INTERNAL LADDER
15	A/R	LEVEL CONTROLS - NEMA ENCLOSURE
16	A/R	LEAK DETECTION SYSTEM
17	A/R	AUTOMATIC PUMPOUT SYSTEM
18	1	POLISHING MEDIA
19	1	OIL STOP VALVE
20	A/R	ADDITIONAL MANWAY RISER HEIGHT
CUSTOMER SUPPLIED EQUIPMENT		
21	A/R	INFLUENT & EFFLUENT PIPING
22	A/R	VENT PIPING
23	A/R	ALL OTHER EXTERNAL PIPING
24	A/R	CONCRETE BALLAST PAD OR DEADMEN
25	A/R	CONCRETE HOUSEKEEPING PAD
26	A/R	ANCHOR BOLTS



REV.	DESCRIPTION	DATE	INIT.
HYDRO QUIP, INC. Water Treatment Systems			
STANDARD CYLINDRICAL OIL/WATER SEPARATOR GENERAL ARRANGEMENT BELOW GROUND MAINTENANCE			DRN. BY: PND CHKD. BY:
PROJECT:		DATE: 4/24/06	
REF:	FILE: STUGOWS_BGMPPM REV1.DWG	SCALE: NTS	
<small>THIS DRAWING IS PROPERTY OF HYDRO QUIP, INC. AND MUST NOT BE COPIED, LOANED OR DISTRIBUTED WITHOUT WRITTEN PERMISSION.</small>			
			REV: A